

0 1

Moose are animals that eat grass.

Figure 1 shows a moose.

Figure 1



Figure 2 shows a food chain.

Figure 2

Grass → Moose → Wolves

0 1**. 1**

What word describes the grass in **Figure 2**?

[1 mark]

Tick **one** box.

Consumer

Predator

Prey

Producer

0 1 . **2** What word describes the wolves in **Figure 2**?

[1 mark]

Tick **one** box.

Communities

Predators

Prey

Producers

Question 1 continues on the next page

Figure 3 and **Figure 4** show how the moose population and the wolf population changed in one area.

Figure 3

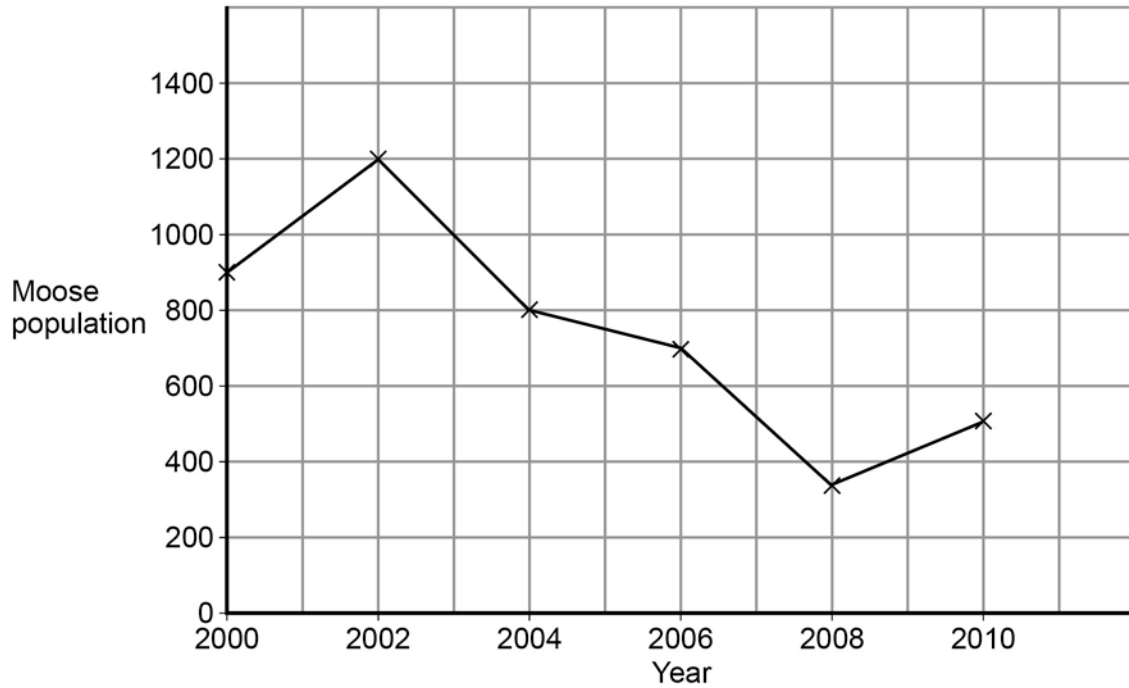
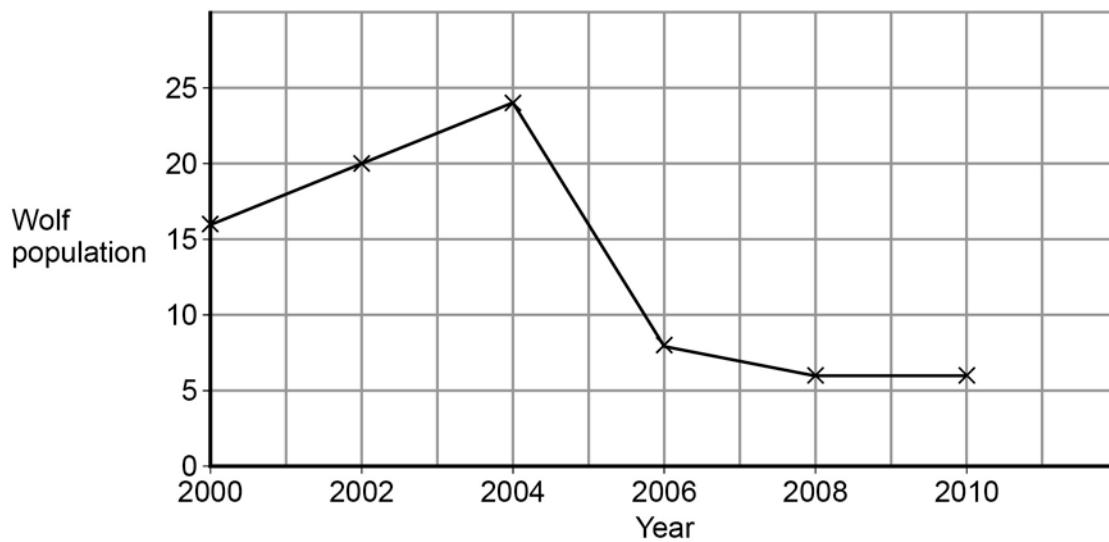


Figure 4



0 1 . 3 Look at **Figure 3**.

In this area the moose population reached its peak in 2002.

What was the size of the moose population in 2002?

[1 mark]

0 1 . 4 Look at **Figure 4**.

How long after the moose population peak did the wolf population peak occur?

[1 mark]

_____ years

0 1 . 5 When the moose population increases, the wolf population increases soon after.

Why does the wolf population increase?

[1 mark]

Tick **one** box.

There is more competition for moose

There is more food for wolves

Other animals prey on moose

There are more predators of wolves

0 1 . 6 Abiotic factors and biotic factors can affect the size of the wolf population.

Which of these are **biotic** factors?

[2 marks]

Tick **two** boxes.

Carbon dioxide levels

Humans hunting

Light intensity

Soil type

Viruses

Question 1

Question	Answers	Extra information	Mark	AO / Spec. Ref.
01.1	producer		1	AO1/1 4.7.2.1
01.2	predators		1	AO1/1 4.7.2.1
01.3	1200		1	AO2/1 4.7.2.1
01.4	2 (years)		1	AO2/1 4.7.2.1
01.5	there is more food for wolves		1	AO2/1 4.7.2.1
01.6	humans hunting		1	AO1/1 4.7.1.3
	viruses		1	AO1/1 4.7.1.3
Total			7	